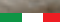


# MONTECARLO COLLECTION



Day and Night



ITALIA 

MONTECARLO

DAY SELECTION

















Alternative "Palace" chair available in ecoleather

**ALF ITALIA PRESENTS THE MONTECARLO COLLECTION:  
BOLD YET ELEGANT LINES, THOROUGH YET WELCOMING.  
A COMPLETE COLLECTION THAT ADDS VALUE TO ANY SETTING, FROM THE DINING ROOM  
TO THE BEDROOM, MAKING YOUR HOME THE SHOWCASE OF WHAT IS "MADE IN ITALY".**























# MONTECARLO

NIGHT SELECTION















PRACTICALITY AND BEGUILING DESIGN, A SCENIC EFFECT AND ATTENTION TO DETAIL. THE LACQUERED SURFACES IN HIGH GLOSS KOTÒ REFLECT LIGHT AND ADD DEPTH TO THE VOLUMES, ENHANCED BY THE CHROME PROFILES.

























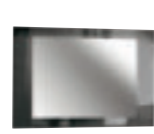
# MONTECARLO DINING ROOM IN KOTÒ HIGH GLOSS



**4/D BUFFET PJMN0610/PJMN0611**  
With 4 doors  
inch W 83" D 22" H 32"  
cm L 211,1 P 54,8 H 81,6  
**to be sold ASSEMBLED PJMN0610**  
Crts 2 kg 137 m<sup>3</sup> 1,29  
**to be sold NOT ASSEMBLED PJMN0611**  
Crts 4 kg 128 m<sup>3</sup> 0,49



**EXTEN. DINING TABLE PJMN0615**  
With one leaf w 20" cm 50  
inch W 63/83" D 37" H 30"  
cm L 160/210 P 95 H 76,5  
Crts 2 kg 111 m<sup>3</sup> 0,6



**MIRROR KJMN640**  
inch W 57" D 1" H 39"  
cm L 145,7 P 2,2 H 100  
Crts 1 kg 26 m<sup>3</sup> 0,13

**EXTEN. DINING TABLE PJMN0616**  
With one leaf w 21 1/4" cm 54

inch W 77/98" D 43" H 30"  
cm L 196/250 P 108 H 76,5  
Crts 2 kg 118 m<sup>3</sup> 0,68



**2 CHAIRS KJMN620**  
With kotò high gloss structure,  
seat and back in grey fabric  
inch W 19 3/4" D 23 1/2" H 40 3/4"  
cm L 50 P 59,5 H 103,5  
Crts 1 kg 16 m<sup>3</sup> 0,42



**2 PALACE CHAIRS KJMN622**  
With kotò high gloss structure,  
seat and back in ecoleather  
inch W 19 3/4" D 23 1/2" H 40 3/4"  
cm L 50 P 59,5 H 103,5  
Crts 1 kg 16 m<sup>3</sup> 0,42



**1/D CURIO RIGHT PJMN0605/PJMN0607**  
With 1 glass door  
inch W 21" D 21" H 75"  
cm L 53,5 P 52,7 H 190,4  
**to be sold ASSEMBLED PJMN0605**  
Crts 2 kg 83 m<sup>3</sup> 0,83  
**to be sold NOT ASSEMBLED PJMN0607**  
Crts 3 kg 84 m<sup>3</sup> 0,27



**1/D CURIO LEFT PJMN0606/PJMN0608**  
With 1 glass door  
inch W 21" D 21" H 75"  
cm L 53,5 P 52,7 H 190,4  
**to be sold ASSEMBLED PJMN0606**  
Crts 2 kg 83 m<sup>3</sup> 0,83  
**to be sold NOT ASSEMBLED PJMN0608**  
Crts 3 kg 84 m<sup>3</sup> 0,27



**2/D CURIO PJMN0600/PJMN0601**  
With 2 glass doors  
inch W 42" D 21" H 75"  
cm L 105,5 P 52,7 H 190,4  
**to be sold ASSEMBLED PJMN0600**  
Crts 2 kg 135 m<sup>3</sup> 1,49  
**to be sold NOT ASSEMBLED PJMN0601**  
Crts 3 kg 135 m<sup>3</sup> 0,45



**TV BASE KJMN630**  
With 2 doors, 1 drawer and 1 shelf  
inch W 67" D 21" H 19"  
cm L 170,2 P 53 H 47,6  
Crts 1 kg 85 m<sup>3</sup> 0,56



**LAMP TABLE KJMN625**

inch W 24" D 24" H 19"  
cm L 60 P 60 H 48,9  
Crts 1 kg 25 m<sup>3</sup> 0,06



**SQUARE TABLE KJMN626**

inch W 35" D 35" H 12"  
cm L 90 P 90 H 29,9  
Crts 1 kg 36 m<sup>3</sup> 0,13



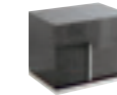
**RECTANGULAR TABLE KJMN627**

inch W 47" D 24" H 12"  
cm L 119,6 P 60 H 29,9  
Crts 1 kg 38 m<sup>3</sup> 0,11

# MONTECARLO BEDROOM IN KOTÒ HIGH GLOSS



**3/DRW. DRESSER KJMN120**  
With 3 drawers  
inch W 64" D 22" H 30"  
cm L 163,5 P 54,8 H 76,3  
Crts 1 kg 102 m<sup>3</sup> 0,85



**NIGHT STAND RIGHT KJMN130 / LEFT KJMN131**  
With 2 drawers  
inch W 26" D 20" H 20"  
cm L 65,8 P 50,3 H 50,6  
Crts 1 kg 34 m<sup>3</sup> 0,23



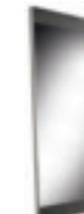
**5/DRW. CHEST KJMN115**  
With 5 drawers  
inch W 32" D 22" H 52"  
cm L 82,4 P 54,8 H 132,9  
Crts 1 kg 84 m<sup>3</sup> 0,74



**DRESSING TABLE KJMN150**  
With mirror, doors and lights  
inch W 47" D 21" H 30"  
cm L 120 P 52,5 H 76,5  
Crts 1 kg 75 m<sup>3</sup> 0,61



**CHAIR KJMN621**  
With kotò high gloss structure,  
seat and back in grey fabric  
inch W 19 3/4" D 23 1/2" H 40 3/4"  
cm L 50 P 59,5 H 103,5  
Crts 1 kg 8,5 m<sup>3</sup> 0,340



**MANHATTAN MIRROR KJMH148**  
inch W 27" D 1" H 75"  
cm L 69 P 3 H 189,4  
Crts 1 kg 39 m<sup>3</sup> 0,09



**MIRROR KJMN140**  
inch W 41" D 1" H 35"  
cm L 104 P 2,2 H 89,9  
Crts 1 kg 19 m<sup>3</sup> 0,09



**Q.S./UK 5" BED PJMN0150**  
Inner size inch 61 1/2" x 81 1/2" - cm 157 x 207  
inch W 76" D 87" H 49"  
cm L 193 P 219,8 H 123,8  
**WITHOUT our orthopedic spring**  
Crts 3 kg 106 m<sup>3</sup> 0,32

**LIGHTS FOR BED**  
Headboard **KJMN200**  
Platform **KJMN201 (to be sold always with KJMN200)**  
inch W 38" D 19" H 51"  
cm L 97,3 P 49 H 130,7  
Crts 1 kg 2 m<sup>3</sup> 0,05

**160 BED PJMN0140**  
Inner size inch 63 1/4" x 79" - cm 160,5 x 200,5  
inch W 76" D 85" H 49"  
cm L 193 P 215,3 H 123,8  
**WITHOUT our orthopedic spring**  
Crts 3 kg 98 m<sup>3</sup> 0,32

**K.S./UK 6.6" BED PJMN0175**  
Inner size inch 76 3/4" x 81 1/2" - cm 195 x 207  
inch W 90" D 87" H 49"  
cm L 227,5 P 219,8 H 123,8  
**WITHOUT our orthopedic spring**  
Crts 3 kg 115 m<sup>3</sup> 0,36

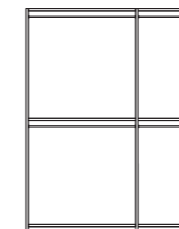
**CAL. K.S. BED PJMN0185**  
Inner size inch 73 1/2" x 85 3/4" - cm 187 x 218  
inch W 90" D 92" H 49"  
cm L 227,5 P 232,8 H 123,8  
**WITHOUT our orthopedic spring**  
Crts 3 kg 118 m<sup>3</sup> 0,36

**180 BED PJMN0145**  
Inner size inch 71" x 79" - cm 180,5 x 200,5  
inch W 84" D 85" H 49"  
cm L 213 P 215,3 H 123,8  
**WITHOUT our orthopedic spring**  
Crts 3 kg 102 m<sup>3</sup> 0,34

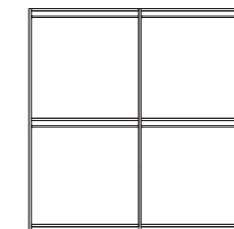
**UK 6" BED PJMN0194**  
Inner size inch 73 1/2" x 85 3/4" - cm 187 x 207  
inch W 90" D 87" H 49"  
cm L 227,5 P 219,8 H 123,8  
**WITHOUT our orthopedic spring**  
Crts 3 kg 115 m<sup>3</sup> 0,36



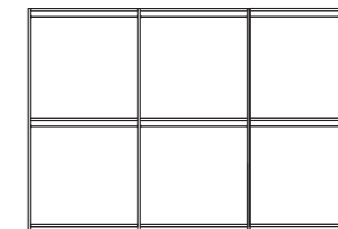
**3/D SWINGING WARDROBE PJMN0010**  
With 3 doors, 2 shelves and 4 hanging rods  
inch W 68" D 25" H 94"  
cm L 172,1 P 63,5 H 239,1  
Crts 8 kg 347 m<sup>3</sup> 0,43



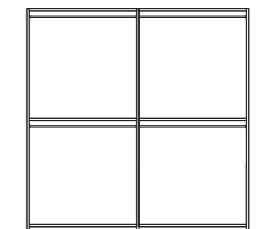
**4/D SWINGING WARDROBE PJMN0012**  
With 4 doors, 2 shelves and 4 hanging rods  
inch W 90" D 25" H 94"  
cm L 228,7 P 63,5 H 239,1  
Crts 8 kg 366 m<sup>3</sup> 0,51



**6/D SWINGING WARDROBE PJMN0014**  
With 6 doors, 3 shelves and 6 hanging rods  
inch W 135" D 25" H 94"  
cm L 341,8 P 63,5 H 239,1  
Crts 10 kg 451 m<sup>3</sup> 0,72

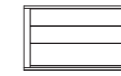


**2/D SLIDING WARDROBE PJMN0020**  
With 2 doors, 2 shelves and 4 hanging rods  
inch W 90" D 27" H 94"  
cm L 228,7 P 67,6 H 239,1  
Crts 9 kg 415 m<sup>3</sup> 0,56



**3/D WOOD DRAWER UNIT KJMN018**  
With 3 drawers (for swinging and sliding doors wardrobes)

inch W 43 1/2" D 19 3/4" H 22 1/4"  
cm L 110,6 P 50 H 56,2  
Crts 1 kg 22 m<sup>3</sup> 0,31





# MONTECARLO COLLECTION

design  
c.r.s. Alf

photo  
STEP

selection  
Fotolito Maistri

print  
OGM



A.L.F. UNO S.P.A. is certified by the **ISO 9001:2008**.

Our furniture finishes are mainly UV-based. All our furniture board is within the E1 norm for formaldehyde emission. By using UV-based finish the formaldehyde is sealed within the furniture board keeping emissions to an absolute minimum.

ATTENTION: PRODUCT APPEARANCE, SIZE, AND/OR MATERIALS MAY BE SUBJECT TO CHANGE WITHOUT NOTICE



**CANADA & USA NORTH-EAST COAST**  
 TEL. (416) 663-2223 - FAX (416) 663-2594  
 E-MAIL: alf@rosnerinternational.com

**CENTRAL AMERICA - CARIBBEAN ISLANDS**  
 TEL. (787) 786-9705 - FAX (787) 785-9835  
 E-MAIL: alvin@arodz.net

**LOUISIANA-OKLAHOMA-TEXAS**  
 TEL. (405) 204-4737  
 E-MAIL: parke9094@att.net

**COLORADO-NEW MEXICO-UTAH**  
 E-MAIL: alf@alf.it

**FLORIDA**  
 TEL. (561) 212-5676 - FAX (561) 997-9169  
 E-MAIL: hollister@bellsouth.net

**MID-WEST/SOUTH-EAST (EXCLUDING FLORIDA)**  
 TEL. (310) 636-1199 - FAX (310) 636-4433  
 E-MAIL: wrw@whitehalldesigns.com

**U.S.A.: HIGH POINT SHOWROOM**  
 (OPEN ONLY DURING FURNITURE MARKET DATES)  
 TEL. (336) 889-9027 - FAX (336) 889-9079

**WESTERN U.S.A.-HAWAII**  
 TEL. (949) 374 2900 - FAX (949) 364-3822  
 E-MAIL: alfwesternusa@aol.com

**AUSTRALIA & NEW ZEALAND**  
 TEL. (08) 9314 3999 - FAX (08) 9314 3777  
 E-MAIL: ross@merlino.com.au

**MEXICO**  
 TEL. +39 3401596793 - FAX +39 0438997246  
 E-MAIL: giulio.botteon@italfurniture.it

**AUSTRIA**  
 E-MAIL: alf@alf.it

**GERMANY**  
 TEL. 0049 2536343450 - FAX 0049 2536343456  
 E-MAIL: info@magenta-vertrieb.de

**SWITZERLAND**  
 TEL. 0041 523661277  
 TEL. 0041 764174344 E-MAIL: marcopetix@gmx.ch  
 TEL. 0041 794048941 E-MAIL: spetix@gmx.ch

**BELGIQUE**  
 TEL. 0032497526746 - FAX 0032497526746  
 E-MAIL: stephane.porignon@telenet.be

**DENMARK**  
 TEL. +45 20475875  
 E-MAIL: lehri@mail.dk

**EAST EUROPE**  
 TEL. +39 3484064921  
 E-MAIL: caputomauro@libero.it  
**HUNGARY:** johns@johns.hu  
**CZECH-SLOVACK:** infinity.prague@volny.cz

**U.K.**  
 TEL. +44 1565631077 - FAX +44 1565621436  
 E-MAIL: tim@3dpartnership.com  
 andrew@3dpartnership.com - jt@3dpartnership.com

**FRANCE - BRETAGNE - NORMANDIE - CENTRE**  
 TEL. 0033609423974  
 E-MAIL: contact@jmcsarl.fr

**FRANCE - EST**  
 TEL. 0033615436985  
 E-MAIL: ch.vidrin@wanadoo.fr

**FRANCE - SUD-EST**  
 TEL. 3365 1330598 - FAX 33958730003  
 E-MAIL: albouy@sanitairediffsion.fr

**FRANCE - ILE DE FRANCE**  
 TEL. 0033609810991  
 E-MAIL: catherinepouette@wanadoo.fr

**FRANCE - NORD**  
 TEL. 0033660816585  
 E-MAIL: treuil.pa@wanadoo.fr

**FRANCE - SUD-OUEST**  
 TEL. 0033686088876 - FAX 0033553289387  
 E-MAIL: fabien.lherbette@hotmail.fr

**FRANCE - RHONE/ALPES**  
 TEL. 0033689923725 - FAX 0033466777294  
 E-MAIL: fredericc.ac@orange.fr

**HELLAS-CYPRUS**  
 TEL. +39 0434 77199 - FAX +39 0434 779591  
 E-MAIL: info@cfsolution.it

**INDIA-SRI LANKA**  
 TEL. +91 8041285290 - 91 9845636644  
 E-MAIL: keith@kreb.in

**MIDDLE-EAST AND THE GULF REGION**  
 TEL. +961 4718160 - FAX +961 4718159  
 E-MAIL: info@furniture-line.com

**POLAND**  
 TEL. +48 618175994 - FAX +48 616429218  
 E-MAIL: karina@qualitaitaliana.pl

**CSI E PAESI BALTICI**  
 TEL. +7-812-3322934 - FAX +7-812-3322934  
 E-MAIL: office.spb@alf.it

**SOUTH AFRICA**  
 TEL. +27 823225215 - FAX +27 865018307  
 E-MAIL: clint@furmtec.co.za

**SPAIN - ANDALUCIA Y EXTREMADURA**  
 TEL. +34 958518744 - FAX +34 958302251  
 E-MAIL: info@javiercastellon.com

**SPAIN - ARAGÓN, SOBRIA, LA RIOJA, NAVARRA Y PAIS VASCO**  
 TEL. +34 976227321 - FAX +34 976227321  
 E-MAIL: repres\_cramon@yahoo.es

**SPAIN - ASTURIAS Y CANTABRIA**  
 TEL. +34 609 803 348 - FAX +34 985 894 580  
 E-MAIL: geliquintueles@yahoo.es

**SPAIN - CASTILLA Y LEON**  
 TEL. +34983541003 - FAX +34983541003  
 E-MAIL: evaristorg@gmail.com

**SPAIN - BARCELONA - CATALUNYA Y ANDORRA**  
 TEL. +34 935531590 - FAX +34 935531590  
 E-MAIL: albert-miro-mauri@hotmail.com

**SPAIN - CATALUNYA Y ANDORRA**  
 TEL. +34 93 718 37 97 - FAX +34 93 718 37 97  
 E-MAIL: pepauge@hotmail.com

**SPAIN - MALLORCA, MENORCA, IBIZA, FORMENTERA**  
 TEL. +34971434086 - FAX +34971434086  
 E-MAIL: l.bonnin@cgac.es

**SPAIN - VALENCIA, MURCIA Y CASTILLA LA MANCHA**  
 TEL. +34 607 210 185  
 E-MAIL: joseluis@nexus-ijh.com

**TURKEY**  
 TEL. +90 3128475080 - FAX +90 3128475280  
 E-MAIL: casa@casa.com.tr



**A.L.F. UNO S.P.A.**

VIA S. PIO X, 17 31018 FRANZENIGO DI GAIARINE (TV) ITALY

TEL. +39-0438 997 111 FAX +39-0438 997 246

alf@alf.it www.alfitalia.com